



**India Meteorological Department
(Ministry of Earth Sciences)**

NATIONAL BULLETIN NO. 15 (Land/03/2025)

TIME OF ISSUE: 0115 HOURS IST

DATED: 20.07.2025

FROM: INDIA METEOROLOGICAL DEPARTMENT (FAX NO. 24643965/24699216/24623220)

TO: CONTROL ROOM, NDM, MINISTRY OF HOME AFFAIRS (FAX.NO. 23093750)

CONTROL ROOM NDMA (FAX.NO. 26701729)

CABINET SECRETARIAT (FAX.NO.23012284, 23018638)

PS TO HON'BLE MINISTER FOR S & T AND EARTH SCIENCES (FAX NO.23316745)

SECRETARY, MOES (FAX NO. 24629777)

H.Q. (INTEGRATED DEFENCE STAFF AND CDS) (FAX NO. 23005137/23005147)

DIRECTOR GENERAL, DOORDARSHAN (23385843)

DIRECTOR GENERAL, AIR (23421105, 23421219)

PIB MOES (FAX NO. 23389042)

UNI (FAX NO. 23355841)

D.G. NATIONAL DISASTER RESPONSE FORCE (NDRF) (FAX NO. 26105912, 2436 3260)

DIRECTOR, PUNCTUALITY, INDIAN RAILWAYS (FAX NO. 23388503)

CHIEF SECRETARY, GOVT. OF RAJASTHAN (FAX NO. 0141-2227114)

CHIEF SECRETARY, GOVT. OF DELHI (FAX NO. 011-23392101)

CHIEF SECRETARY, GOVT. OF GUJARAT (FAX NO. 079-23250305)

Subject: Depression over central parts of northwest Rajasthan

The Depression over northwest Rajasthan moved nearly westwards with a speed of 12 kmph during past 6 hours and lay centred at 2330 hrs IST of yesterday, the 19th July, 2025, over the same region near latitude 27.5°N and longitude 73.0°E about 60 km south-southwest of Bikaner, 70 km east-northeast of Phalodi, 130 km north of Jodhpur, and 220 km east-northeast of Jaisalmer.

It is likely to continue to move nearly westwards across northwest Rajasthan and weaken gradually into a well-marked low-pressure area during next 12 hours.

Warnings:

(i) Rainfall Warning:

West Rajasthan: Light to moderate rainfall at most places with **heavy to very heavy rainfall** at a few places and **extremely heavy rainfall** isolated places over southwest Rajasthan till morning of 20th July.

East Rajasthan: Light to moderate rainfall at most places with **heavy rainfall** at a few places over southeast Rajasthan till morning of 20th July.

Saurashtra & Kutch: Light to moderate rainfall at most places with **heavy to very heavy rainfall** at isolated places till morning of 20th July.

Gujarat region: Light to moderate rainfall at most places with **heavy to very heavy rainfall** at isolated places over north Gujarat region and **heavy rainfall** at isolated places over south Gujarat region till morning of 20th July.

(ii) Wind Warnings: Squally wind speed reaching 35-45 kmph gusting to 55 kmph over northwest Rajasthan is likely to prevail during next 12 hours and decrease gradually thereafter.

(iii) Impact Expected and Action Suggested due to very heavy/extremely heavy rainfall and squally winds (Rajasthan and Gujarat)

Impact expected:

- ❖ Breaking of tree branches, uprooting of small trees like banana, papaya, drum sticks. Strong wind and rain may damage plantation, horticulture and standing crops.
- ❖ Partial damage to vulnerable structures due to strong winds and rain.
- ❖ Minor damage to kutcha houses/walls, huts and roads due to heavy rain.
- ❖ Loose objects may fly.
- ❖ Road and rail traffic may be affected due to heavy rain and squally winds.
- ❖ There could be localised landslides, mudslides, landslips, water logging, inundation and flooding over low lying areas.
- ❖ Occasional reduction in visibility due to heavy rainfall.
- ❖ Helicopter services may get affected.

Action suggested:

- ❖ People are advised to keep a watch on the weather for worsening conditions and be ready to move to safer places accordingly.
- ❖ Take safe shelters; do not take shelter under trees, as there could be lightning.
- ❖ In case of expected lightning, unplug electrical/ electronic appliances, immediately, get out of water bodies and keep away from all the objects that conduct electricity.
- ❖ Tourism and recreational activities to be regulated.
- ❖ Helicopter services to be regulated.

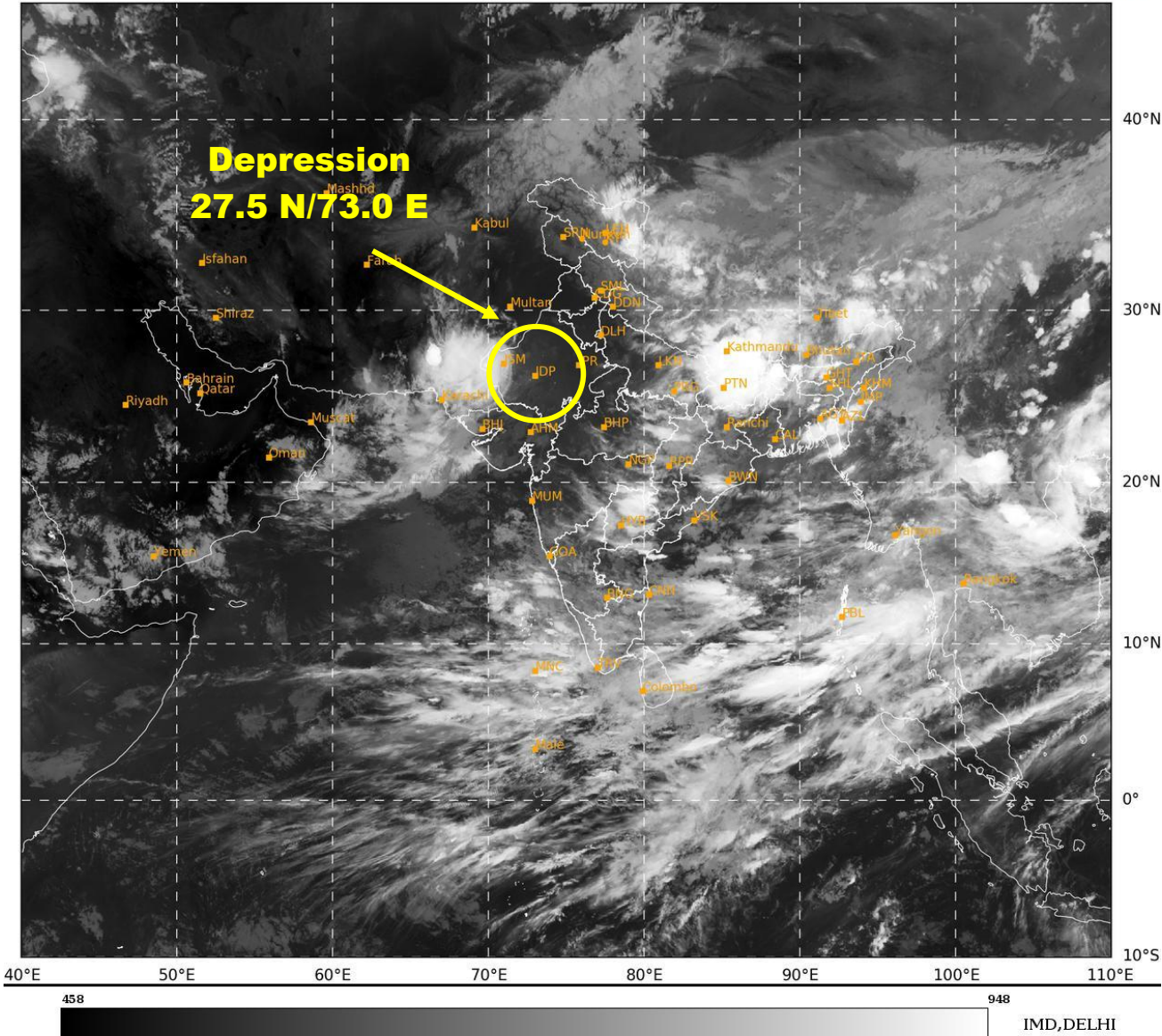
Next bulletin will be issued at 0830 hrs IST of today, the 20th July, 2025.

(Dr. M. T. Bushair)
Scientist-D, IMD, New Delhi

Copy to: Meteorological Centres- Bhopal, Jaipur, Delhi, Ahmedabad.

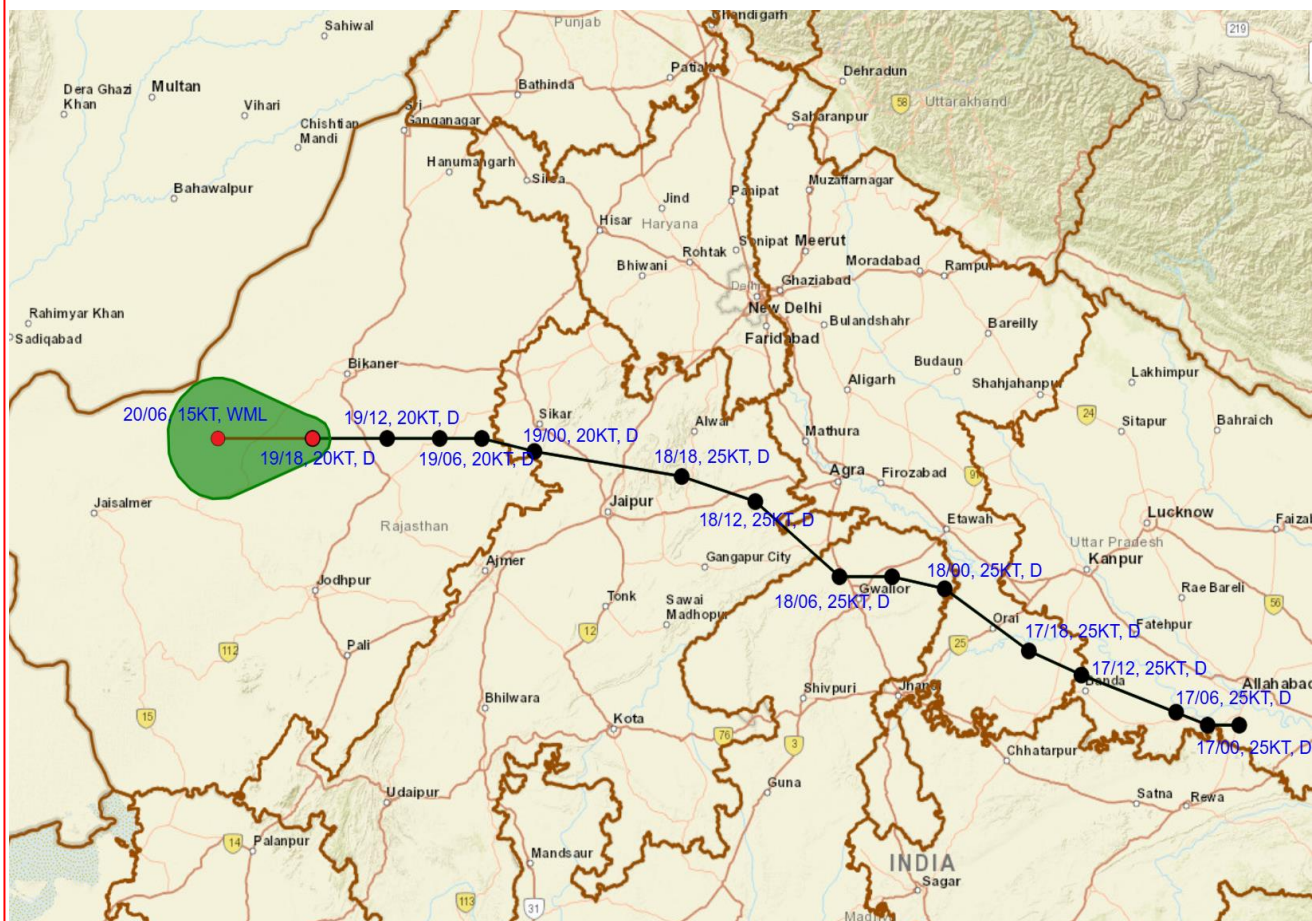
L1C Mercator

19-07-2025/(2345 to 0012) IST





**OBSERVED AND FORECAST TRACK ALONG WITH CONE OF UNCERTAINTY
OF LAND DEPRESSION OVER CENTRAL PARTS OF NORTHWEST RAJASTHAN
AT 2330 HRS. IST (1800 UTC) OF 19th JULY 2025**

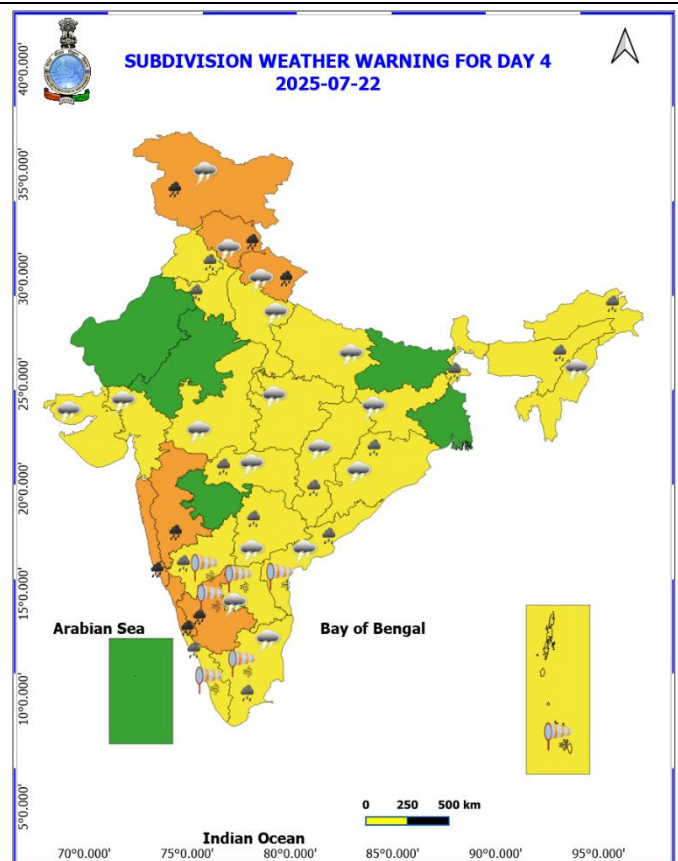
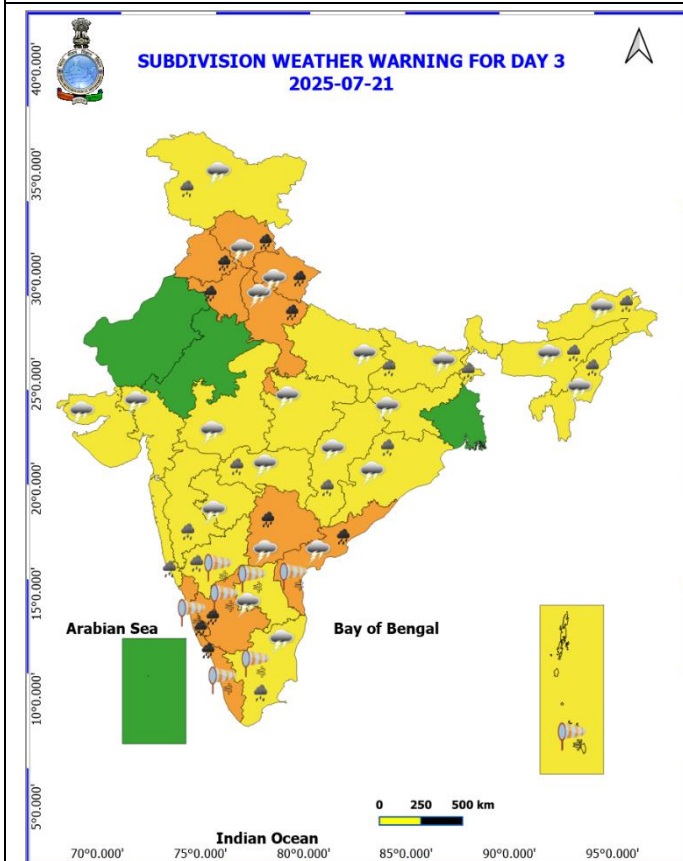
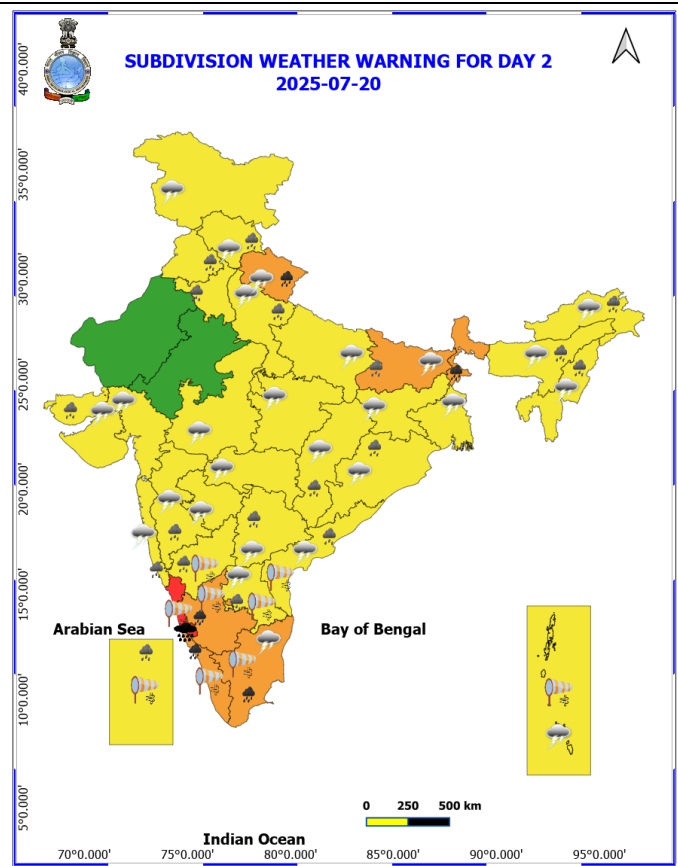
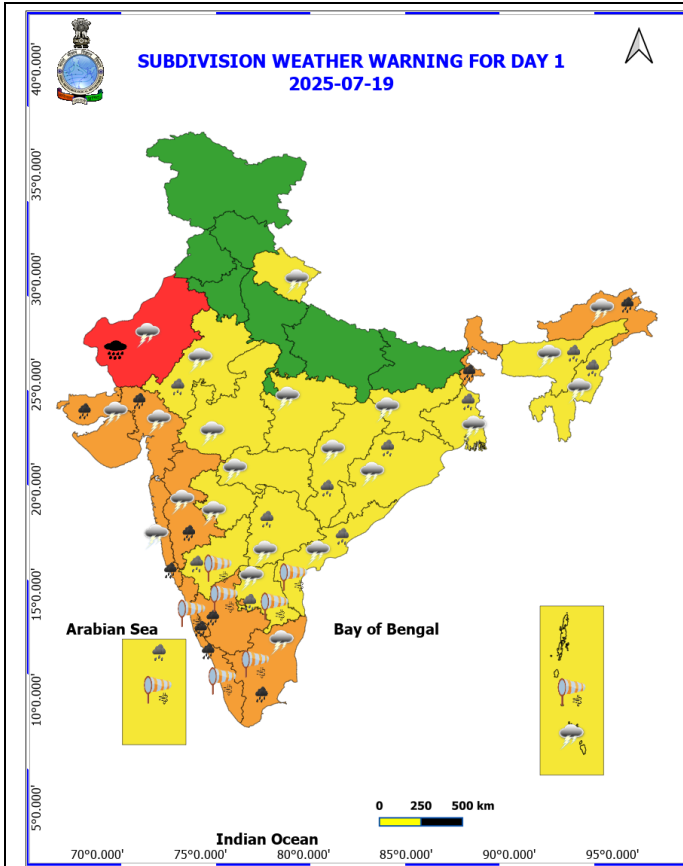


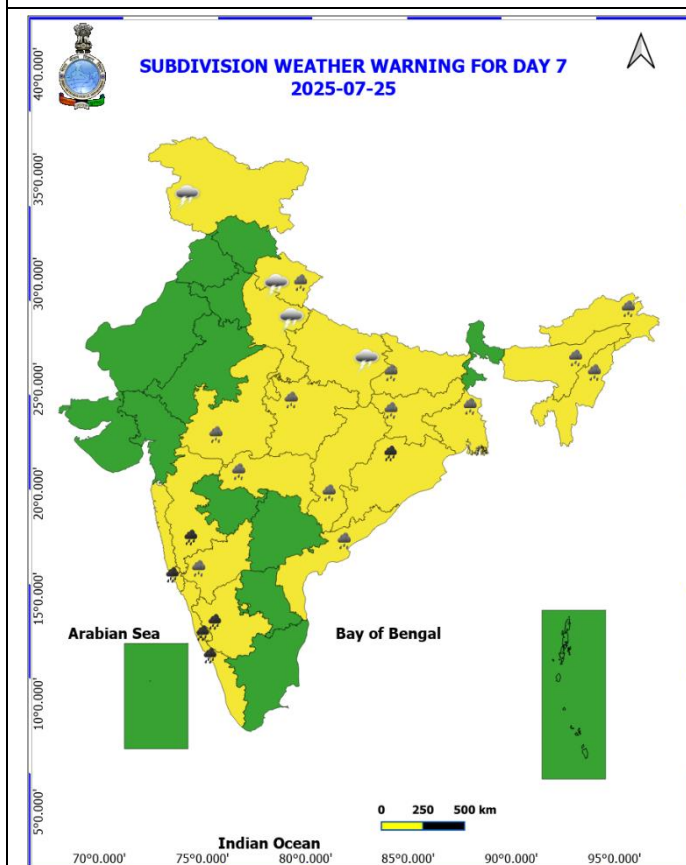
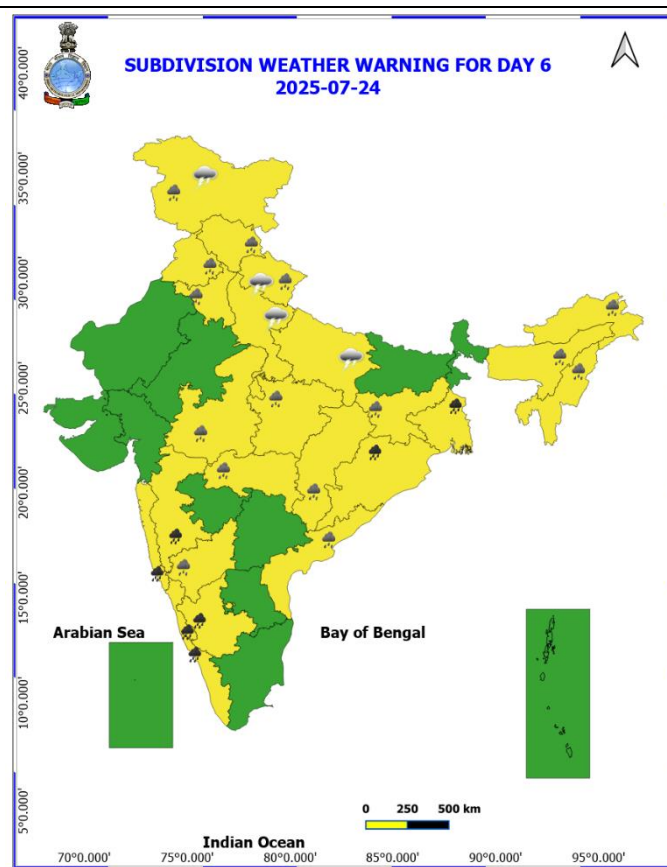
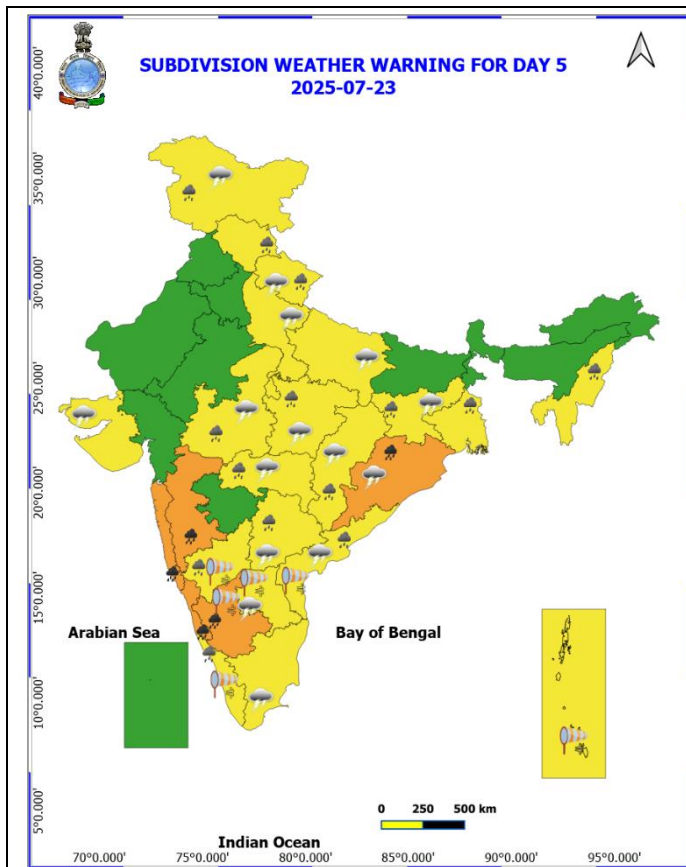
DATE/TIME IN UTC
IST=UTC + 0530
L: LOW PRESSURE AREA
WML: WELL MARKED LOW PRESSURE AREA
D: DEPRESSION (17-27 KT)
DD: DEEP DEPRESSION (28-33 KT)
CS: CYCLONIC STORM (34-47 KT)
SCS: SEVERE CYCLONIC STORM (48-63KT)
VSCS: VERY SEVERE CYCLONIC STORM (64-89 KT)
ESCS: EXTREMELY SEVERE CYCLONIC STORM (90-119 KT)
SuCS: SUPER CYCLONIC STORM (≥ 120 KT)

1KT=1.85 KMPH

- LESS THAN 34 KT
- 34-47 KT
- ≥ 48 KT
- OBSERVED TRACK
- FORECAST TRACK
- ▲ CONE OF UNCERTAINTY

Weather Warning Graphics





Fog	Heavy Snow	Cold Wave
Heavy Rain	Dust Storm	Cold Day
Very Heavy Rain	Heat Wave	Ground Frost
Extremely Heavy Rain	Warm Night	
Thunder & Lightning	Hot Day	
Hailstorm	Hot & Humid	
Dust Raising Winds	Strong Surface Winds	

COLOUR CODED WARNING

No Warning (No Action)
Watch (Be Aware)
Alert (Be Prepared To Take Action)
Warning (Take Action)

Probabilistic Forecast

Terms	Probability of Occurrence (%)
Unlikely	< 25
Likely	25 - 50
Very Likely	50 - 75
Most Likely	> 75

* Red colour warning does not mean "Red Alert", Red colour warning means "Take Action".
Forecast and Warning for any day is valid from 0830 hours IST of day till 0830 hours IST of next day.
For more details, kindly visit <https://mausam.ind.gov.in> or contact: 011-2434-4599
(Service to the Nation since 1875)

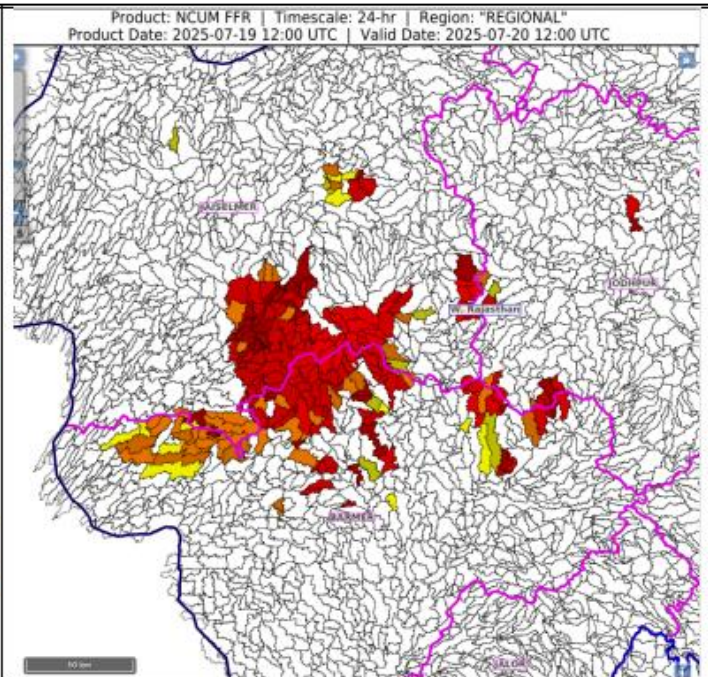
Flash Flood Guidance

24 hours Outlook for the Flash Flood Risk (FFR) till 1730 IST of 20-07-2025 :

Low to Moderate flash flood risk likely over few watersheds & neighbourhoods of following Met Sub-divisions during next 24 hours.

West Rajasthan - Barmer, Jaisalmer and Jodhpur districts.

Surface runoff/ Inundation may occur at some fully saturated soils & low-lying areas over Area of Concern (AoC) as shown in map due to expected rainfall occurrence in next 24 hours.



Flash Flood Risk

High Risk (Take Action)

Moderate Risk (Be Prepared)

Low Risk (Be Updated)